

# Nu-Line<sup>®</sup> Heavy Duty.

Bulletin No. NHD-DD1.00-1 Group No. 1.00

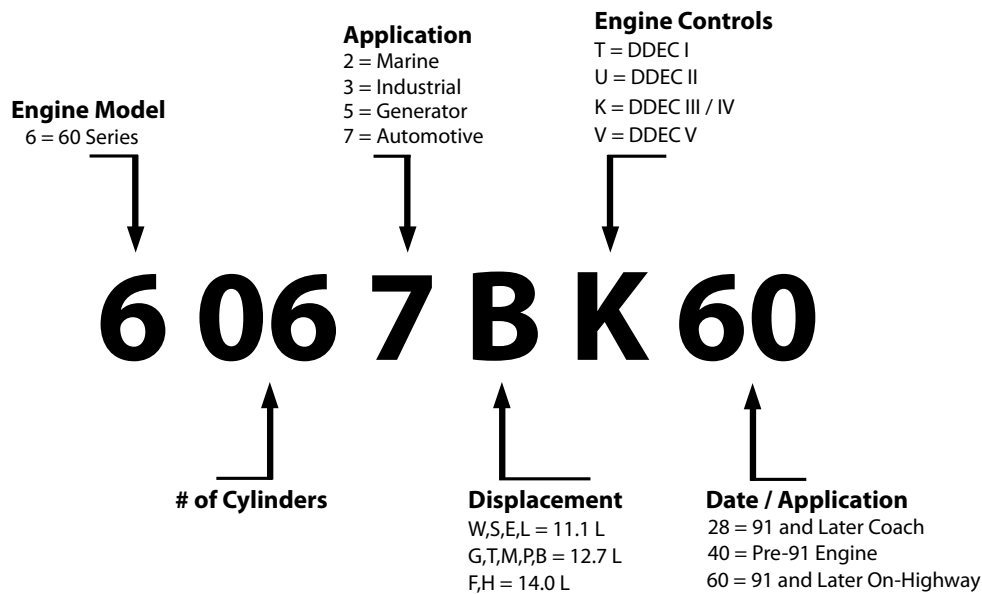
October 28, 2011 Page 1 of 2

## Detroit Diesel Series 60<sup>®</sup> Engine Identification.

In order to provide the correct parts for your Detroit Diesel Series 60 engine, it is important to first get the model and serial number on your engine. This information is located on a plate on the valve cover as well as stamped into a pad located under the intake manifold on the engine block.

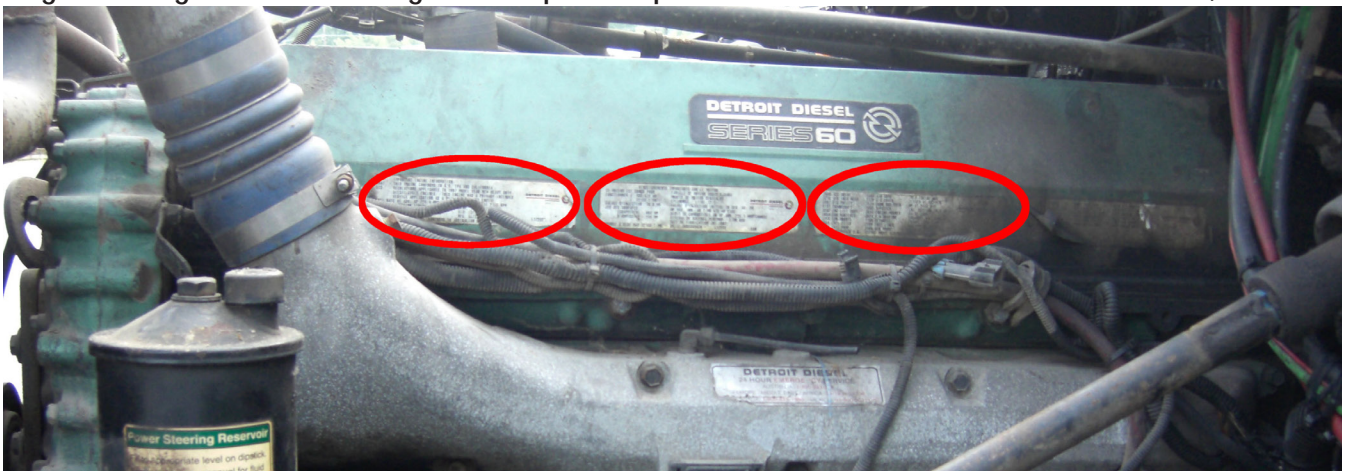
The serial number will begin with 06R followed by seven digits. The primary engines serviced by Nu-line Heavy Duty are 12.7 liter displacement engines ranging roughly from serial number 6R411,649 to 6R740,000 produced from 1998 to 2003.

An example model number is shown below along with the possible variations and their meanings.



Additional identification information –

Two different compression ratios were available – 15.0:1 and 16.5:1. The easiest way to determine which is in your engine is to get the connecting rod and piston option number off of the rocker cover label, located here:



Then go to <http://www.partscatalog.relianceparts.com/shop.aspx> to search the catalog for the connecting rod and piston option numbers.

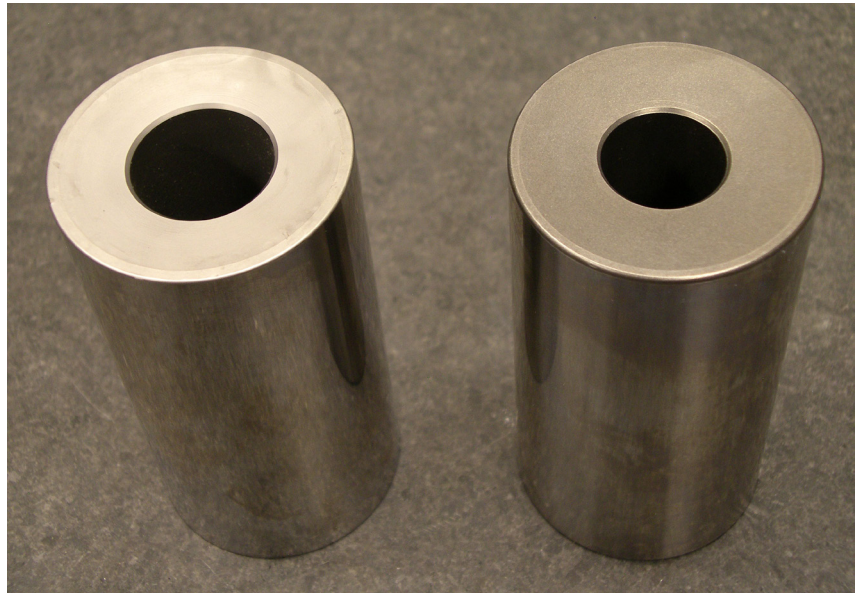
# Nu-Line<sup>®</sup>

## Heavy Duty.

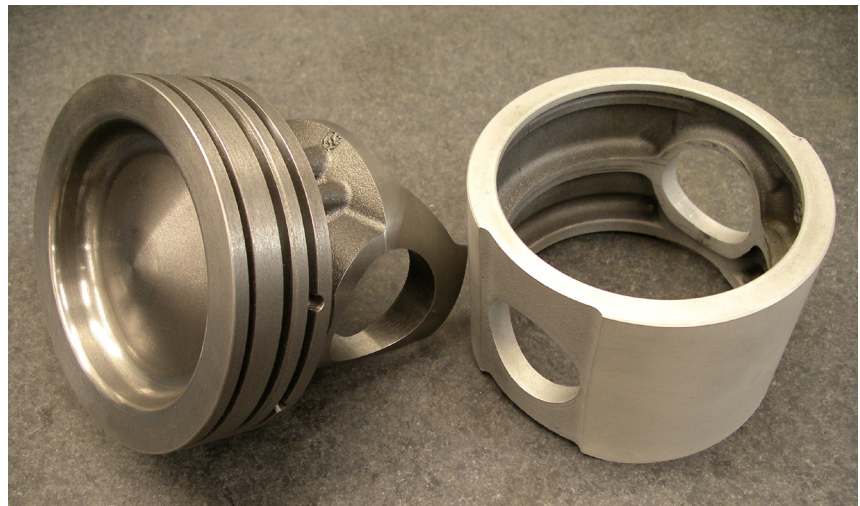
Bulletin No. NHD-DD1.00-1 Group No. 1.00

October 28, 2011 Page 2 of 2

In the early DDEC IV engines, the manufacturer used a light (1.02" bore ID) and a heavy (0.86" bore ID) piston pin. Inter-mixing these pins in an engine can cause vibration issues and care should be taken to prevent this. If all six cylinders are being replaced, they should be updated to the heavy pin design. NuLine Heavy duty overhaul kits are available in both configurations.



Non-premium engines use open ended connecting rods and pistons with cast iron domes and skirts.



Premium engines use closed end connecting rods and pistons with forged steel domes and aluminum skirts.

